



Grosvenor Court, Irving Road W14

**FINLAY
BREWER**

Grosvenor Court Irving Road W14

2 Double Bedrooms

Open Plan Kitchen/Breakfast/Reception

Shower Room

Storage

Communal Garden

EPC Rating E 54

A well presented 2 double bedroom flat within a period property with direct access to communal gardens at the rear.

There is a bright open plan kitchen/breakfast/reception with a door to the communal gardens; 2 double bedrooms to the front with fitted wardrobes; a shower room and good storage in the entrance hallway. This well configured property of approximately 544 sq ft is ideally located for the transport hub at Shepherds Bush Green and Westfield London is moments away - a MUST SEE!

GUIDE: £565,000
SHARE OF FREEHOLD

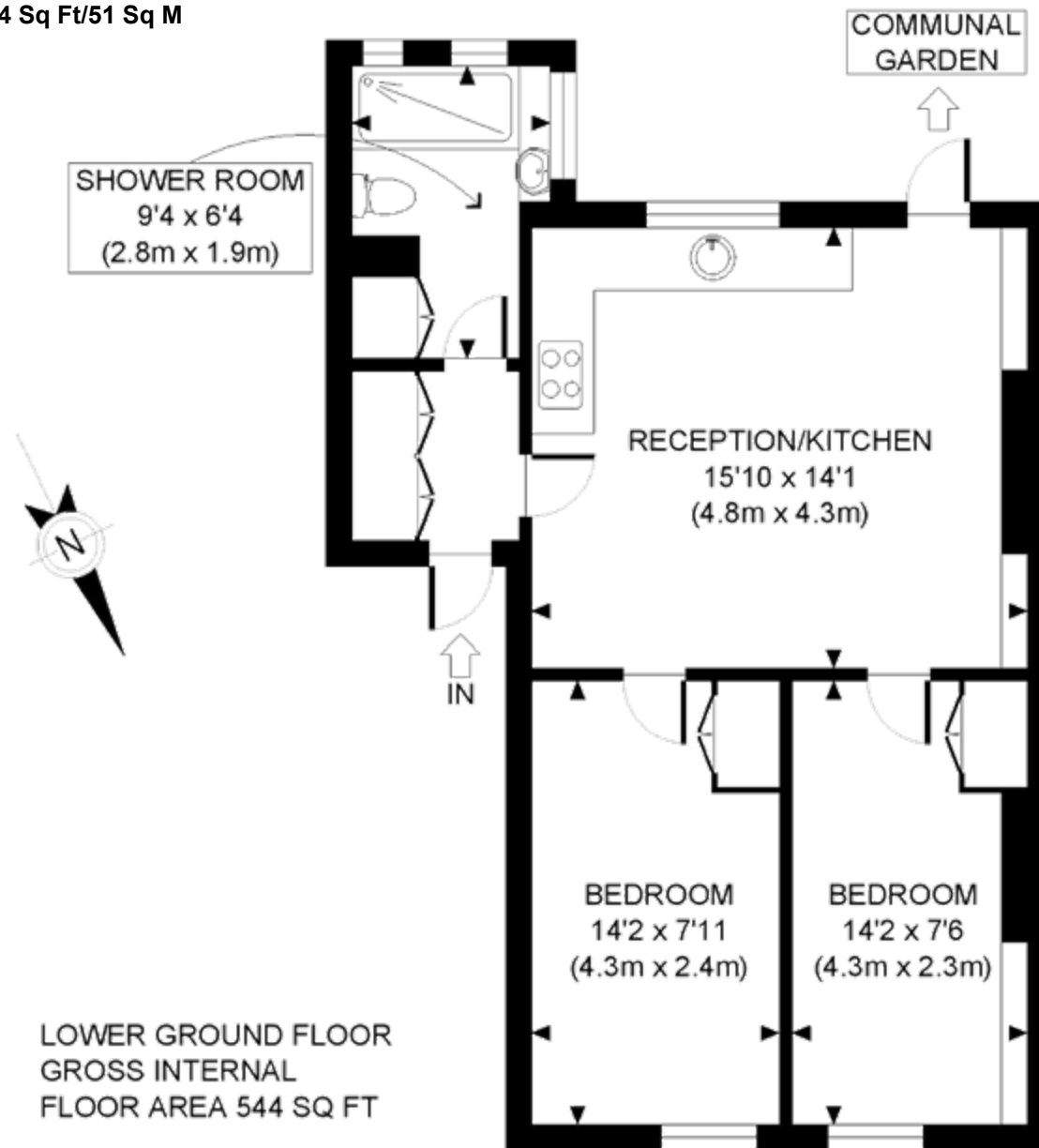
SUBJECT TO CONTRACT

LEASE: 992 YRS APX
SERVICE CHARGE: £125 PCM APX





Approximate Gross Internal Area 544 Sq Ft/51 Sq M



LOWER GROUND FLOOR
GROSS INTERNAL
FLOOR AREA 544 SQ FT

FOR ILLUSTRATIVE PURPOSES ONLY - NOT TO SCALE
The position & size of doors, windows, appliances and other features are approximate only.